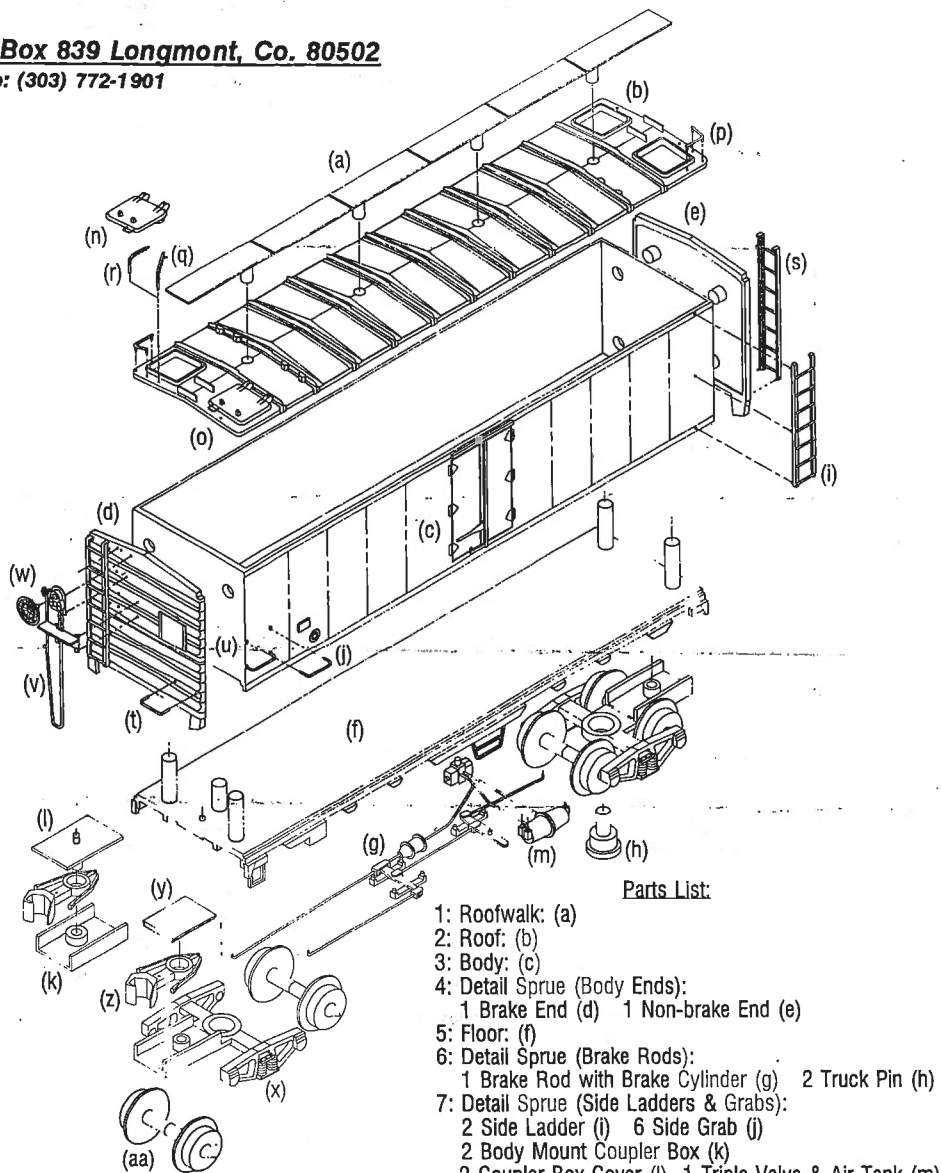


InterMountain Railway Company

P.O. Box 839 Longmont, Co. 80502

Phone: (303) 772-1901



Parts List:

- 1: Roofwalk: (a)
- 2: Roof: (b)
- 3: Body: (c)
- 4: Detail Sprue (Body Ends):
 - 1 Brake End (d) 1 Non-brake End (e)
- 5: Floor: (f)
- 6: Detail Sprue (Brake Rods):
 - 1 Brake Rod with Brake Cylinder (g) 2 Truck Pin (h)
- 7: Detail Sprue (Side Ladders & Grabs):
 - 2 Side Ladder (l) 6 Side Grab (j)
 - 2 Body Mount Coupler Box (k)
 - 2 Coupler Box Cover (l) 1 Triple Valve & Air Tank (m)
- 8: Detail Sprue (Roof Hatches & Details):
 - 2 Left Hatch (n) 2 Right Hatch (o) 2 Roof Grab (p)
 - 4 Open Hatch Latch (q) 4 Closed Hatch Latch (r)
- 9: Detail Sprue (End Ladders, Grabs & Brake Detail):
 - 2 End Ladder (s) 4 End Grab (t) 4 Tack Board (u)
 - 1 Brake Assembly (v) 1 Brake Wheel (w)
- 10: Trucks:
 - 2 Truck (x) 2 Coupler Box Cover (y)
 - 2 Coupler (z) 4 Wheel Set (aa)

Recommended Tools:

X-acto Knife Fine Clippers Tweezers
 Small File or Emery board Pin Vice
 Small Drill Set Liquid Styrene Cement

R-40-23 Refrigerator Car Kit

GENERAL INSTRUCTIONS:

Please read the instructions and study the drawings and parts before beginning assembly of this kit! Many of the parts are very delicate. In order for your completed model to be as attractive and authentic as possible, DO NOT ATTEMPT TO BEND, TWIST OR BREAK PARTS FROM SPRUE. The most effective tools to use in removing parts from their sprue are an X-acto knife or fine clippers.

It is best to test fit ALL PARTS before applying glue. The locators sometimes are slightly damaged in removing from the runner and must be trimmed before the locator holes will accept them. Generally very small amounts of glue are needed to affix styrene parts, so we recommend that glue be used sparingly.

The connecting point between the part and the "runner" to which it is attached is called a "gate". The gates are designed to be trimmed completely flush with the part except in those cases where the part itself is used as the gate.

ASSEMBLY INSTRUCTIONS:

Step 1: Completion of Body

Complete the body by adding the Ends (d & e) and Floor (f) to Body (c) shell using locators on the parts and locator holes in the body. Glue as necessary.

Step 2: Underbody Detail

(a) Glue Triple Valve and Air Tank (m) with adjoining lines in place. Large locator on bottom of triple valve matches with locator hole in post near outside edge of underbody. Locators on underside of air tank then match up with locator holes on opposite side of underbody.

(b) Glue Brake Rod with Brake Cylinder (g) in place. Locator on bottom of brake cylinder matches locator hole on post near center of underbody. Ten other locator pins then match locator holes on bottom of underbody.

Step 3: End Body Details

(a) Attach Brake Assembly (v) to brake end of car using eight locators on back of housing and matching locator holes on car body. Glue Brake Wheel (w) in place using locator hole near the top of the brake assembly.

(b) Place End Ladders (s) and End Grabs (t) on each end of the car using locators on parts and locator holes in ends of body.

(c) Locate a Tack Board (u) on each end of the car body. Location varies so reference should be made to photos or drawings as desired.

Step 4: Side Details

(a) Place Side Ladders (l) and Side Grabs (j) on each side of the car using locators on parts and locator holes in sides of car body.

(b) Locate a Tack Board (u) on each side of the car body. Location varies so reference should be made to photos or drawings as desired.

Step 5: Roof, Roofwalk, and Hatch Details

(a) Prepare Roof (b) by removing the four pins on the underside of the edge of the roof. Remove excess material with an X-acto knife or small file.

(b) Locate Roofwalk (a) on roof using four locator pins on roofwalk and four locator holes in roof. Glue roofwalk in place at each end bracket and at locator pins on underside of roof.

(c) Put Hatches (n & o) in place. There are both left-hand and right-hand hatches. Hatch handle goes to the inside, or nearer to the roofwalk. Hatches may be open or closed or any combination thereof. Two sets of Hatch Latches (q & r) are therefore included.

(d) Glue Roof Grabs (p) in place using locator "feet" on grab irons and locator holes at opposite corners of roof.

(e) IF YOU ARE GOING TO WEIGHT YOUR MODEL, BE SURE TO DO SO BEFORE GLUING ROOF IN PLACE. (The NMRA standard weight for a completed 40 foot car is .95 ounces.)

(f) After test fitting roof, carefully put in place on car body. Roof may be glued in place, or press fit. If glued, it is suggested that only a small amount of glue be used.

Step 6: Trucks and Couplers

(a) Place Couplers (z) in Coupler Boxes (k) and retain by press fitting Coupler Box Covers (y).

(b) Add Wheel Sets (aa) to truck assemblies.

(c) Attach truck assemblies to car using Truck Pins (h).

(NOTE: Optional Coupler Boxes ((k & l) have been included in the parts to body mount the couplers if desired. If trucks are to be body-mounted, the coupler box on the truck must be removed.)